

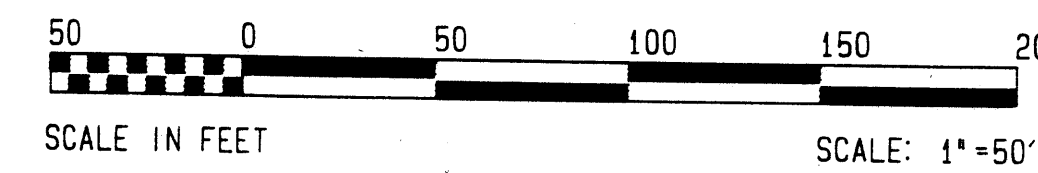
STATE OF FLORIDA
COUNTY OF MARTIN
I, MARSHA STILLER, CLERK OF THE CIRCUIT COURT OF MARTIN COUNTY, FLORIDA HEREBY CERTIFY THAT THIS PLAT WAS FILED FOR RECORD IN PLAT BOOK 13, PAGE 29 MARTIN COUNTY, FLORIDA PUBLIC RECORDS THIS 22nd DAY OF August, 1995.
MARSHA STILLER, CLERK
CIRCUIT COURT
MARTIN COUNTY, FLORIDA

BY: _____
DEPUTY CLERK
FILE NUMBER: 1132227

PLAT III OF MARINER VILLAGE, P. U. D. (R)

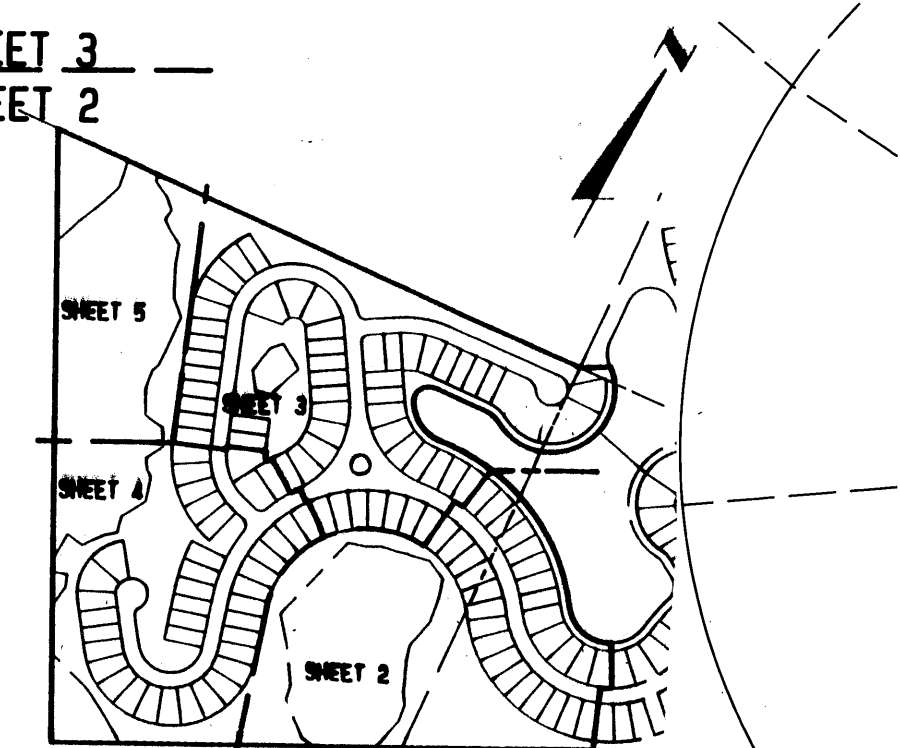
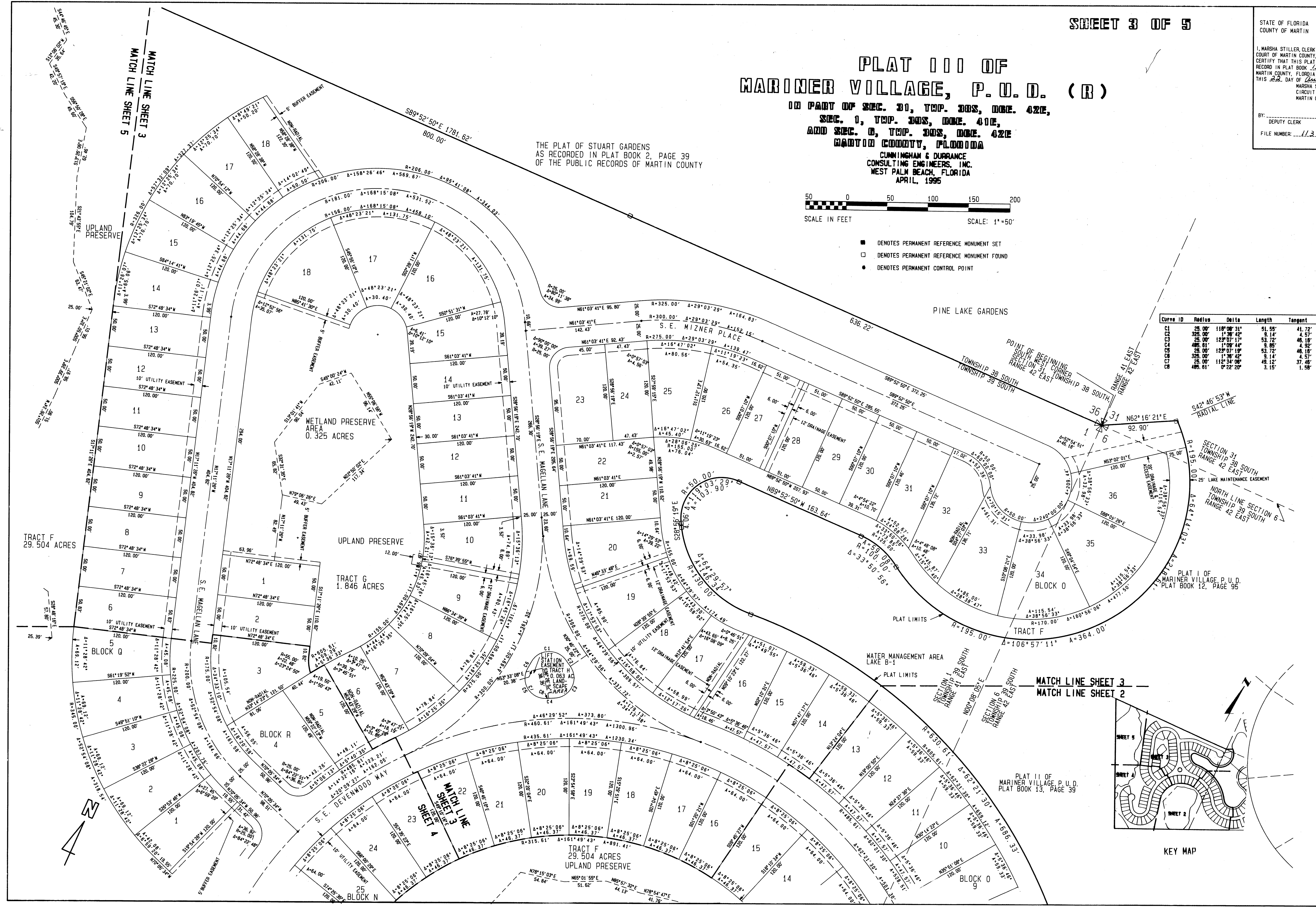
IN PART OF SEC. 30, TWP. 30S, RGE. 42E,
SEC. 0, TWP. 30S, RGE. 41E,
AND SEC. 0, TWP. 30S, RGE. 42E
MARTIN COUNTY, FLORIDA
CUNNINGHAM & DURRANCE
CONSULTING ENGINEERS, INC.
WEST PALM BEACH, FLORIDA
APRIL, 1995

THE PLAT OF STUART GARDENS
AS RECORDED IN PLAT BOOK 2, PAGE 39
OF THE PUBLIC RECORDS OF MARTIN COUNTY



- DENOTES PERMANENT REFERENCE MONUMENT SET
- DENOTES PERMANENT REFERENCE MONUMENT FOUND
- DENOTES PERMANENT CONTROL POINT

Curve ID	Radius	Delta	Length	Tangent	Chord
C1	25.00'	110°00'31"	51.55'	41.72'	42.88'
C2	325.00'	1°38'42"	9.14'	4.57'	9.14'
C3	25.00'	123°07'17"	53.72'	46.18'	43.97'
C4	485.81'	1°08'14"	9.05'	4.92'	9.05'
C5	25.00'	123°07'19"	53.72'	46.18'	43.97'
C6	25.00'	1°38'42"	9.14'	4.57'	9.14'
C7	25.00'	112°34'08"	48.12'	37.48'	41.58'
C8	485.81'	0°22'20"	3.15'	1.58'	3.15'



KEY MAP